

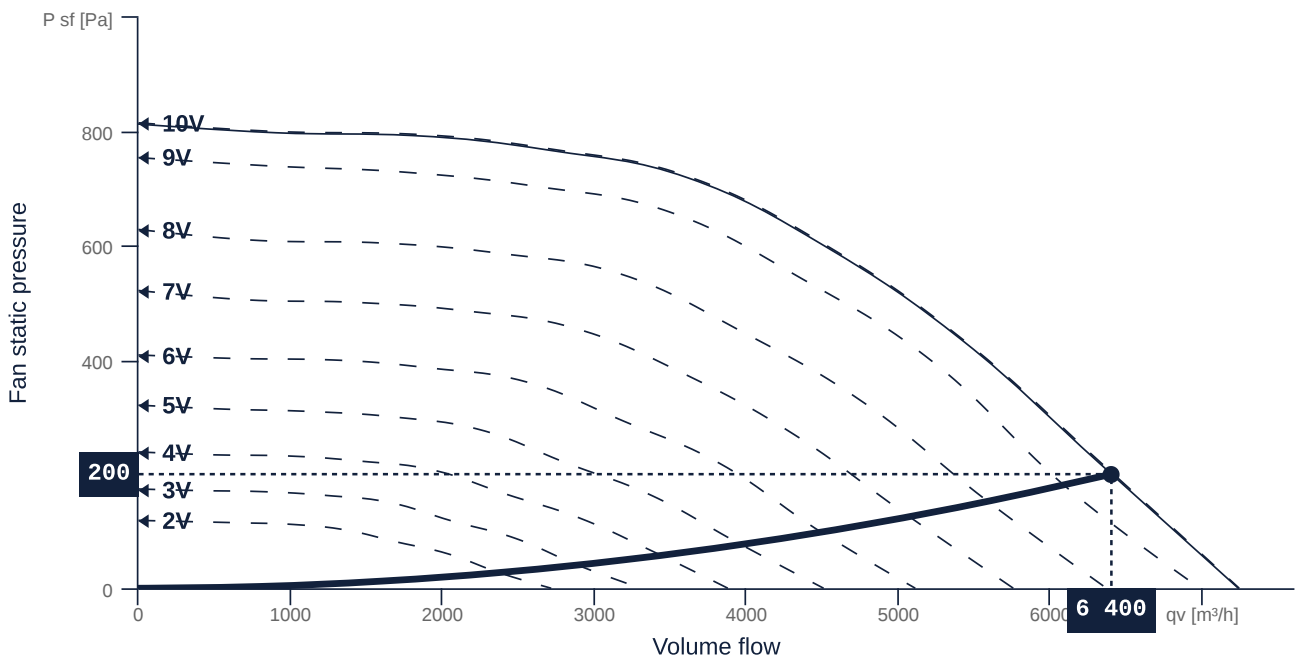
DVN 450 EC 30

144001



- Backward curved radial impeller
- Vertical discharge
- Housing: AlMg3, hinged, grease drain
- High efficiency EC motor, steplessly controllable
- For greasy kitchen exhaust air, up to 120 °C
- Integrated device switch

MAP



TECHNICAL SPECIFICATIONS

Name	Value	Unit	Formula symbol
Volume flow	6400	m³/h	qv _{calc}
Pressure	200	Pa	psf _{calc}
Fan pressure	260	Pa	psf
Fan static pressure	200	Pa	pf
Current consumption	7	A	I _e
Current consumption	7	A	I _{ed}
Electrical power consumption	1018	W	P _{ek}
Control voltage	10	V	U _{ctrl}
Rotation speed	1636	1/min	N
Total static efficiency	35	%	etaFaPeK
Total efficiency	45	%	etatPeK
Specific fan power	573	W/(m³/s)	sfp _{vent}
Sound power level inlet	85	dB(A)	LwA5
Sound power level outlet	86	dB(A)	LwA6



zur Produktseite

DVN 450 EC 30

144001

SONIC DATA

Sound power	mid-frequency tape										(Lw) dB(A)
	Σ	63	125	250	500	1000	2000	4000	8000	16000	
suction	85	49	68	79	81	76	75	79	71	59	LWA5
blowout	86	53	69	80	81	80	75	74	65	55	LWA6

GENERAL DATA

Name	Value	Unit	Formula symbol
Duct size	-		WxH _{duct}
Pipe connection size (DN)	-		DN
Electrical protection (entire device)	10 A		fuse
Housing material	Aluminium		matcasing
Impeller material	Steel		matimpeller
Weight	82.5	kg	m
Nominal air flow rate, nominal point m ³ /h	3376.8	m ³ /s	q _{vnom}
Nominal external pressure, static	406.2	Pa	p _{ext}
Fan type	Radial		Fan _{type}
Category / Installation situation	A		cat
Sound insulation	No		snd _{ins}
Rated voltage (entire device)	230	V	U _{rated}
Phases (entire device)	1~		phase

MAXIMAL DATA

Name	Value		Unit	Formula symbol
	50 Hz	60 Hz		
Max. power consumption (device)	1240	1240	W	P _{ed, max}
Max. operating current (device)	8.87	8.87	A	I _{ed, max}
Max. speed	1640	1640	1/min	n _{max}
Max. stat. efficiency	57.5	57.5	%	η _{es}
Max. fan efficiency	59.9	59.9	%	η _e
Max. flowrate	7240	7240	m ³ /h	q _{v, max}
Max. stat pressure	820	820	Pa	p _{st, max}
Max. medium temperature	120	120	°C	T _{m, max}
Max. environment temperature	50	50	°C	T _{amb, max}
Min. environment temperature	-20	-20	°C	T _{amb, min}



zur Produktseite

DVN 450 EC 30

144001

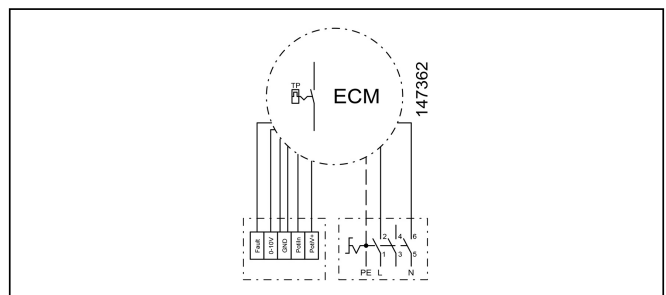
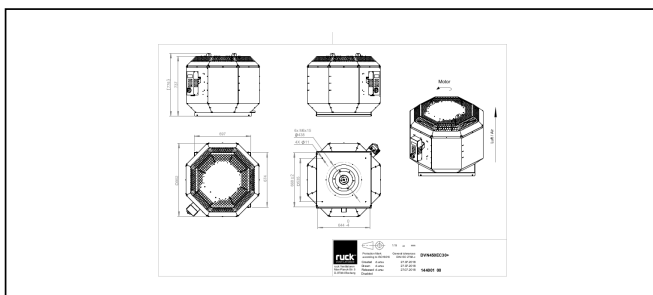
MOTOR DATA

Name	Value		Unit	Formula symbol
	50 Hz	60 Hz		
Rated frequency (device)	50.000000			f
Motor type	EC			phase
Control type	stepless-controlled			ctrltype
Installation	IRM (In)			install
Rotation direction	right			rotation
Isolation class	ISO F			ISOclass
Protection class	IP54			IP _{motor}
Is pole-changeable	No			polexch
Type of power supply	AC 1~			pwr _{sup} motor
Rated voltage	230		V	U _{rated, f1}
Rated current	8		A	I _{rated, f1}
Shaft power	1100		W	P _{out, f1}
Speed	2100		1/min	n _{f1}
Cos Phi	0.000000	0.000000		cos φ

PRODUCT INFORMATION

Name	Value	Unit	Formula symbol
Category / Installation situation	A		cat
Fan type	Radial		Fan _{type}

SCHALTPLÄNE / MASSZEICHNUNGEN



zur Produktseite

DVN 450 EC 30

144001

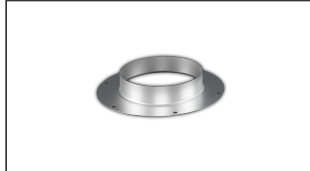
MECHANICAL ACCESSORIES

DVK 400 10 | 152897



- Automatic roof shutter
- Galvanized steel sheet

DAF 400 | 109826



- Roof inlet flange
- Galvanized steel sheet

DSF 450-10 | 126193



- Flat roof socket
- Made of Aluminium AlMg3
- Sound and heat insulation

DSF 450-12 | 133850



- Sloped roof socket
- Made of Aluminium AlMg3
- Sound and heat insulation
- For roof slope 3° to 24° (available in 3° increments)

DAP 450 | 133976



- Adapter plate for roof mounting of roof fans
- Galvanized steel sheet

DSS 450-10 | 126461



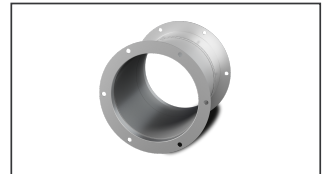
- Flat roof socket silencer
- Made of Aluminium AlMg3, mineral wool baffles
- Sound and heat insulation

DSS 450-12 | 134444



- Sloped roof socket silencer
- Made of Aluminium AlMg3, mineral wool baffles
- Sound and heat insulation
- For roof slope 3° to 24° (available in 3° increments)

DAS 400 F4 | 150093



- Flexible roof inlet spigot F4
- Temperature resistant up to 400 °C

CLIMASET 01 | 111314



- Climaset
- For differential pressure measurement



zur Produktseite

ELECTRICAL ACCESSORIES

MTP 20 | 128146



- Potentiometer 10 k Ω
- Switching contact 1A/250V AC - 2,5A/12V DC
- Max. ambient temperature 50 °C
- VDE

MTP 30 | 143289



- Stepped potentiometer 10 k Ω
- Step 1 + 2 settable 10 % - 100 % Vdc
- Step 3 100 % Vdc
- Supply voltage +10 Vdc

MTP 40 | 147359



- Potentiometer 10 k Ω
- Connection in terminal box
- Max. ambient temperature 50 °C
- PU: 20 pieces

SEN AIR | 148641



- Airflow and temperature transducer
- Measuring range temperature 0...+50 °C
- With adjustable switching threshold (air speed)
- Measuring range air velocity up to 20 m/s

CON P1000 | 115259



- Constant pressure control
- Actual value display possible via optional control unit
- Output 0-10 V DC + FC enable + setpoint reached
- Pressure setting by means of decade switch

SEN P1000 | 126080



- Differential pressure sensor
- P-control: Pressure supply air and pressure exhaust air each controlled via one sensor
- PV-control: supply air fan controlled via SEN P1000 and exhaust air fan automatically tracked
- P = 2 pcs. required, PV = 1 pcs. required

MTP 50 | 153133



- Potentiometer with multifunction output
- 230 VAC \pm 10 % / 50-60 Hz
- Selectable output: 1-10 VDC / 2-20 mA / 10-100 % PWM
- Min. and max. output value adjustable



zur Produktseite